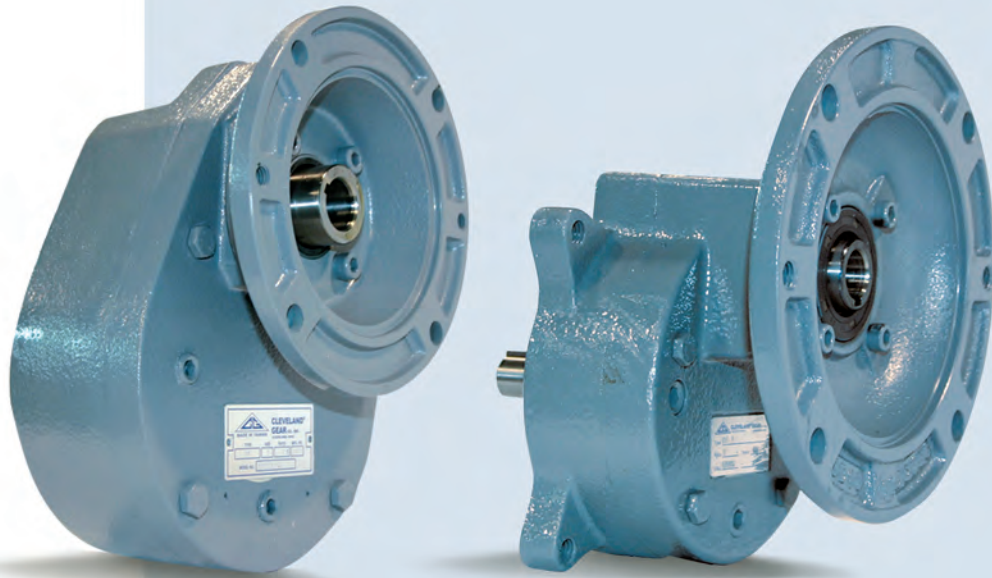


HELICAL RATIO MULTIPLIERS
Cleveland

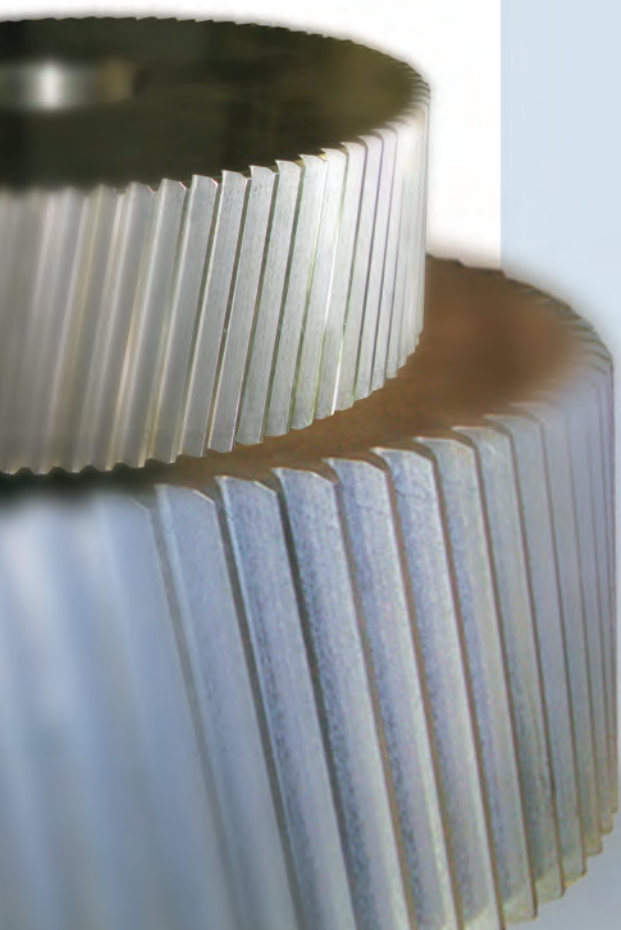
Helical RATIO MULTIPLIERS



CLEVELAND "RM" SERIES HELICAL RATIO MULTIPLIERS

FEATURES:

- 3 Case Sizes - 1, 2 and 3
- 5 Ratios Available - 1.5:1, 2:1, 3:1, 4:1 and 5:1
- Rugged Cast Iron Housings
- Helical Surface Hardened and Finished Steel Gears
- NEMA Input Flanges and NEMA C-Face Output Adaptors - 56C, 140TC, 180TC and 210TC
- Used with "M" Series Worm Gear Units to Create Double Reduction Helical-Worm Reducers from Stock*
- Supplied Without Oil as Standard or Oil Filled Upon Request



www.ClevelandModular.com

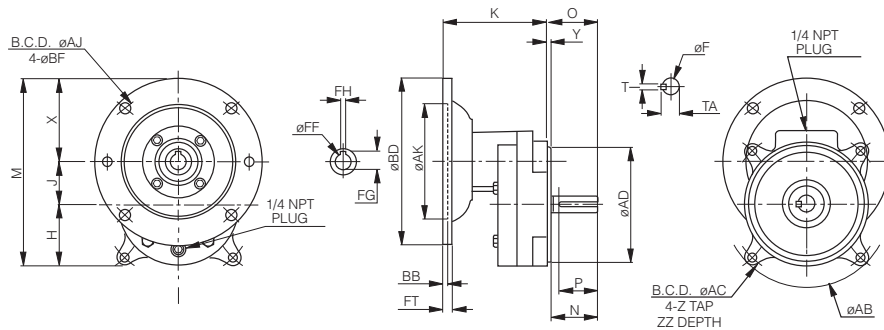


* Please consult your modular customer service representative or local sales representative for proper selection.

RATIO MULTIPLIERS

1750 INPUT RPM		SIZE 1			SIZE 2			SIZE 3		
RATIO	RPM OUT	HP IN	HP OUT	TORQUE*	HP IN	HP OUT	TORQUE*	HP IN	HP OUT	TORQUE*
1.5	1167	2.00	1.95	105	6.68	6.55	354	14.50	14.21	768
2	875	1.80	1.76	127	5.76	5.65	407	12.50	12.25	882
3	583	1.50	1.46	158	3.83	3.76	406	10.00	9.80	1059
4	438	1.25	1.22	176	2.87	2.82	406	7.20	7.06	1017
5	350	1.00	0.98	176	2.30	2.26	407	6.10	5.98	1077

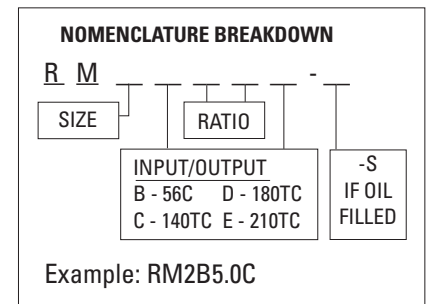
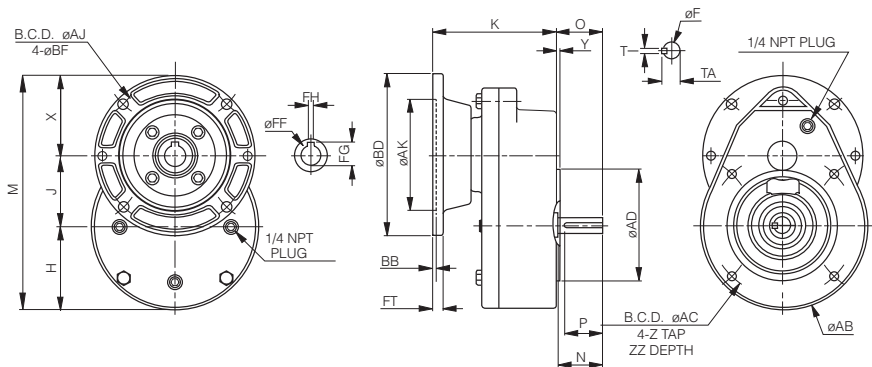
*TORQUE = IN-LB



DIMENSIONS

SIZE	INPUT	F	H	J	K	M	N	O	P	T	TA	TR	X	Y
1	56C	0.625	2.39	1.675	4.19	7.31	1.89	2.04	1.57	3/16	0.704	0.71	3.25	0.16

INPUT FLANGE										OUTPUT FLANGE						
SIZE	INPUT	AJ	AK	BB	BD	BF	FF	FG	FH	FT	OUTPUT	AB	AC	AD	Z	ZZ
1	56C	5.875	4.5	0.16	6.50	0.43	0.625	0.716	3/16	0.35	56C	6.50	5.875	4.5	3/8 - 16	19/32



DIMENSIONS

SIZE	INPUT	F	H	J	K	M	N	O	P	T	TA	TR	X	Y
2	56C	0.625	3.37	2.875	5.00	9.49	1.84	1.90	1.57	3/16	0.704	0.70	3.25	0.16
2	140TC	0.875	3.37	2.875	5.00	9.49	1.84	1.90	1.57	3/16	0.958	0.70	3.25	0.16
3	180TC	1.125	4.25	2.875	6.44	11.63	2.50	3.31	1.97	1/4	1.236	1.24	4.50	0.31
3	210TC	1.375	4.25	2.875	6.44	11.63	2.50	3.31	1.97	5/16	1.513	1.51	1.50	0.31

INPUT FLANGE										OUTPUT FLANGE						
SIZE	INPUT	AJ	AK	BB	BD	BF	FF	FH	FG	FT	OUTPUT	AB	AC	AD	Z	ZZ
2	56C	5.875	4.5	0.16	6.50	0.41	0.625	3/16	0.716	0.43	56C	6.50	5.875	4.5	3/8 - 16	29/32
2	56C	5.875	4.5	0.16	6.50	0.41	0.625	3/16	0.716	0.43	140TC	6.50	5.875	4.5	3/8 - 16	29/32
2	140TC	5.875	4.5	0.16	6.50	0.41	0.875	3/16	0.716	0.43	140TC	6.50	5.875	4.5	3/8 - 16	29/32
3	180TC	7.25	8.5	0.24	9.00	0.41	1.125	1/4	1.240	0.59	180TC	8.50	7.250	8.5	1/2 - 13	29/32
3	210TC	7.25	8.5	0.24	9.00	0.41	1.375	5/16	1.524	0.59	210TC	8.50	7.250	8.5	1/2 - 13	29/32

Note: Dimensions are for reference purposes only. Certified dimensions furnished upon request.

CLEVELAND GEAR'S LIBRARY OF INFORMATION

"MUSTS" FOR YOUR ENGINEERING DEPARTMENT

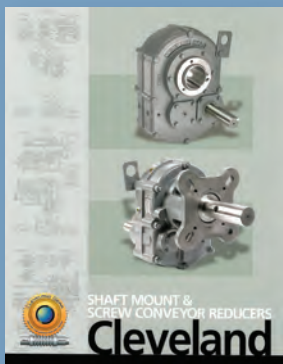


Catalog #400 – "M" Series Modular Speed Reducers

Rating and dimensional data for the 1.33"-4.25" center distance drives in solid, C-face quill worms, with solid and hollow shaft outputs. Part numbering and configuration data is provided.

Catalog #810 – "WG" Series Speed Reducers

Metric center distances with worm over, worm under, and universal configurations in single and double reductions. Rating and dimensional data is provided for all types.

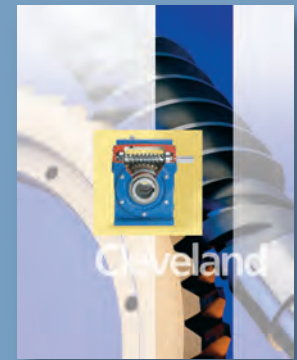


Catalog #SMCG – Helical Shaft Mount and Screw Conveyor Reducers

Shaft mount reducers available in sizes 2-9. Size 2-6 designed for Screw Conveyor applications with CEMA adapter kits/shafts. Suitable for AGMA Class I, II or III applications.

Catalog #700 – Millennium Gear Drives

Catalog provides data on ratings, dimensions, and design configurations for 5"-12" C.D. drives. Universal mounting with motor adapters & helical attachments.



Catalog #900 – General Capabilities Brochure

Information on CGC history, current design services, production capabilities and products.

100th Anniversary Brochure

Provides a pictorial history of Cleveland Gear's first 100 years designing and producing worm gearing, worm gear reducers and the development of its design and production capabilities for helical gearing/custom drives.



3249 EAST 80th STREET
CLEVELAND, OHIO 44104
PHONE 216-641-9000

TOLL-FREE 800-579-6632 **TOLL-FREE FAX 800-579-6645**

www.clevelandgear.com