



# SALES BULLETIN

## CLEANLINE SERIES

The **CLEANLINE** unit is designed to satisfy the demands for speed reducers being used in food and beverage industry applications. The surface has been prepared to be as smooth as possible with as few places as possible for food ingredients to collect. This allows for easy cleaning and safe operation in the difficult food environment. Additionally the design allows for safe and clean operation in all other food processing applications whether the conditions are dry or wet. The **CLEANLINE'S** many features make it an ideal product for all food industry applications.

### Product:

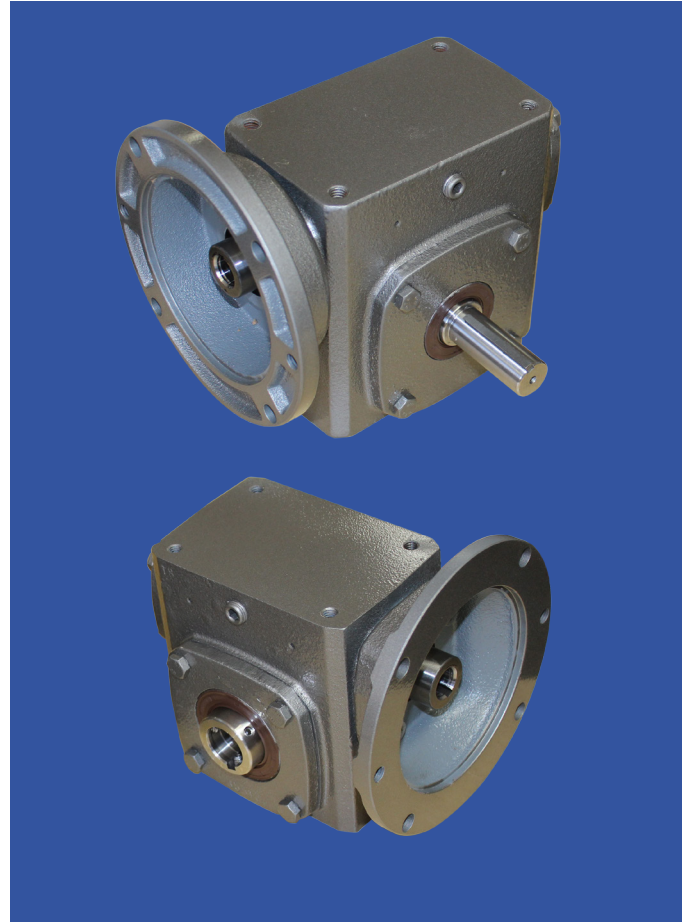
Modular Cast Iron Reducers.

### Standard Features:

- Stainless Steel Epoxy Paint & Primer (USDA Approved)
- Stainless Steel Low Speed Shafts
- Smooth Exterior for Easy Cleaning
- Viton® Low Speed Seals
- Stainless Steel Pressure Vent to Keep Contaminants Out
- Stainless Steel Motor Fasteners Included
- Food Grade Lubricant

### Applications:

- Bread Moulders
- Cutting and Slicing Equipment
- Dough Forming Equipment
- Food Conveyors
- Food Make Up Equipment
- Handling and Storage Equipment
- Ovens and Oven Conveyors
- Packaging Equipment for Food
- Washers



### Single Reduction Models:

Sizes 17, 20 & 26

All standard configurations and ratios.

### Double Reduction Models:

Sizes 13-17, 13-20 & 17-26

### Availability:

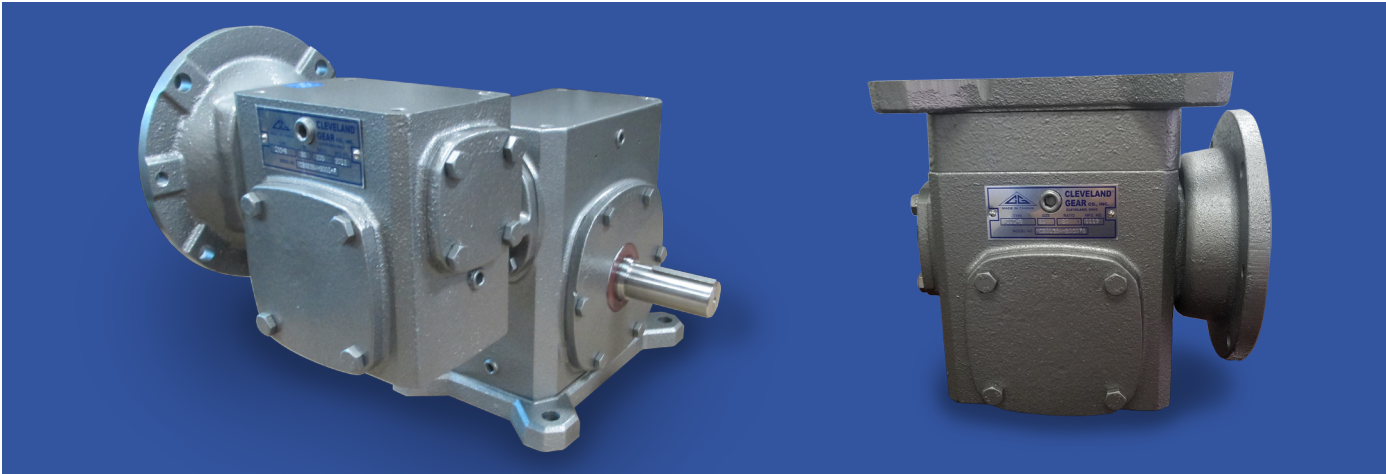
Standard lead time plus 5–7 Days ARO.

\*Specials may be available on request - consult factory.



# SPECIFICATIONS

## CLEANLINE SERIES SPEED REDUCERS



### Single Reduction Models:

<b>C.D. Sizes</b>	<b>Solid Output Shaft</b> (Single or Double)	<b>Hollow Output Shaft</b> (Symetrical w/ Stainless Steel Set Screws)
<b>17</b>	<b>MC 1713</b>	<b>MC 1714</b>
<b>20</b>	<b>MC 2013</b>	<b>MC 2014</b>
<b>20 G</b>	<b>MC 2013 G</b>	<b>MC 2014 G</b>
<b>26</b>	<b>MC 2613</b>	<b>MC 2614</b>
<b>26 G</b>	<b>MC 2613 G</b>	<b>MC 2614</b>

**Ratios Available:** 5.1, 7.5:1, 10:1, 15:1, 20:1, 25:1, 30:1, 40:1, 50:1, 60:1

**Motor Flanges:** Size 17 & 20 – 56C & 140TC / Size 26 – 56C, 140TC & 180TC

**Hollow Output Bores:** Size 17 – 5/8", 3/4" & 1.0"  
 Size 20 – 1.0", 1 1/4" & 1 7/16"  
 Size 26 – 1.0", 1 3/16", 1 1/4" & 1 7/16"

Note: For Ratings and Dimensional Information, please see Cleveland Gear Catalog on "M" Series Modular Gearboxes (#410)