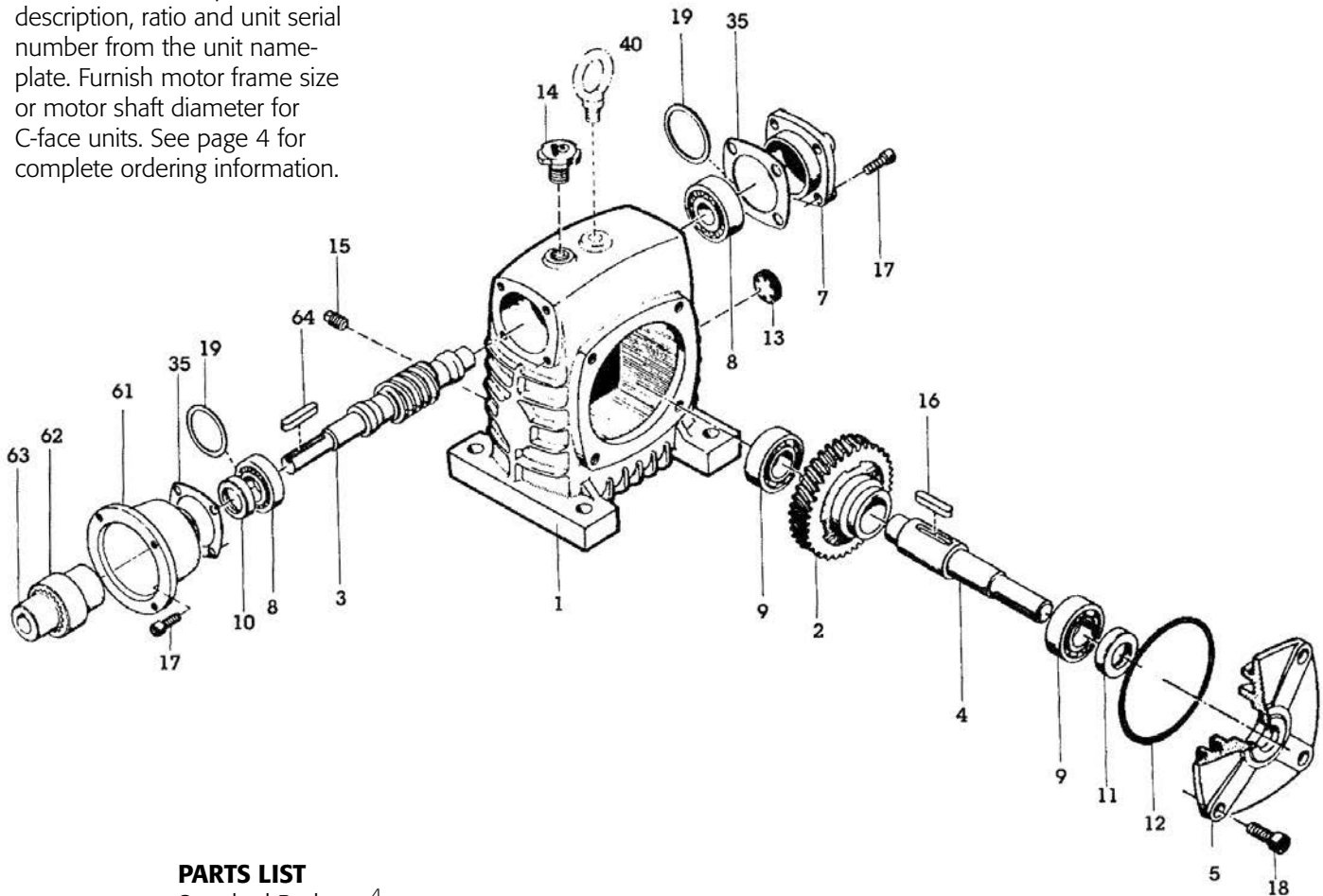


PARTS LIST AND EXPLODED DRAWINGS

WORM TOP (WT & WTC/U & UC)

TO ORDER PARTS

Please furnish complete model description, ratio and unit serial number from the unit name-plate. Furnish motor frame size or motor shaft diameter for C-face units. See page 4 for complete ordering information.



PARTS LIST

Standard Reducer ⁴

No. PART DESCRIPTION	No. PART DESCRIPTION
1. Housing	15. Plug, Drain
2. Gear, Worm or Worm Wheel	16. Key, Worm Gear & Shaft
3. Wormshaft	17. Cap Screw, High Speed Cover
4. Shaft, Output	18. Cap Screw, Low Speed Cover
5. Cover, Low Speed	19. Shim, High Speed Bearing
6. Cover, High Speed, Open (not shown) ¹	20. Shim, Low Speed Bearing (not shown) ²
7. Cover, High Speed, Closed	35. Gasket, High Speed Cover
8. Bearing, High Speed	40. Eye Bolt (Sizes 100 to 225 only)
9. Bearing, Low Speed	61. Flange, Motor Mounting Adapter ¹
10. Oil Seal, High Speed	62. Reducer Coupling Half (WTC)
11. Oil Seal, Low Speed	63. Motor Coupling Half (WTC)
12. O-ring	64. Input Key
13. Gauge, Oil Level	65. Output Shaft Key (not shown)
14. Plug, Oil Filter	